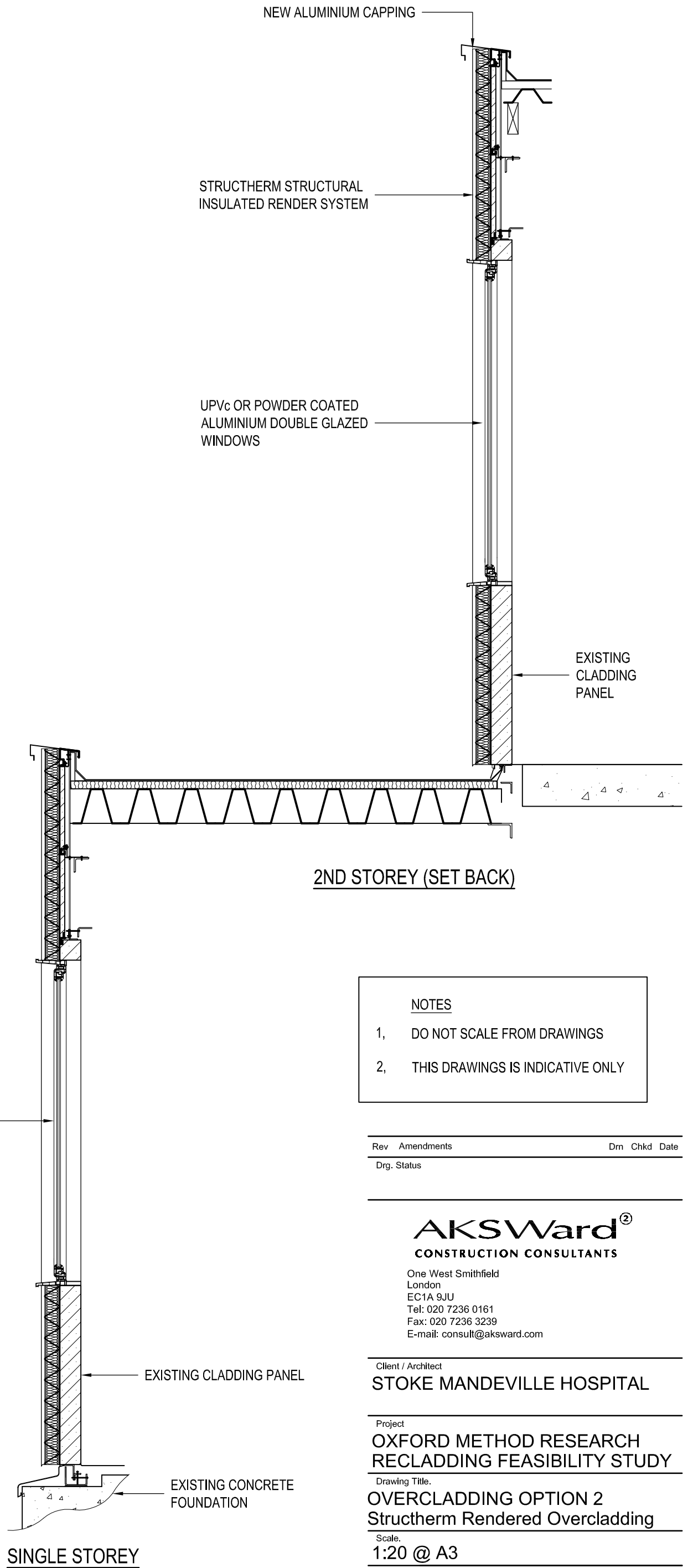


TWO STOREY



SINGLE STOREY

- NOTES**
- 1, DO NOT SCALE FROM DRAWINGS
 - 2, THIS DRAWINGS IS INDICATIVE ONLY

Rev	Amendments	Drn	Chkd	Date

AKSWard²
CONSTRUCTION CONSULTANTS
 One West Smithfield
 London
 EC1A 9JU
 Tel: 020 7236 0161
 Fax: 020 7236 3239
 E-mail: consult@aksward.com

Client / Architect
STOKE MANDEVILLE HOSPITAL

Project
**OXFORD METHOD RESEARCH
 RECLADDING FEASIBILITY STUDY**

Drawing Title
**OVERCLADDING OPTION 2
 Structherm Rendered Overcladding**

Scale
1:20 @ A3

Approved	Stage	Date

Project No.	Drawing No.	Rev.
L051424	04	